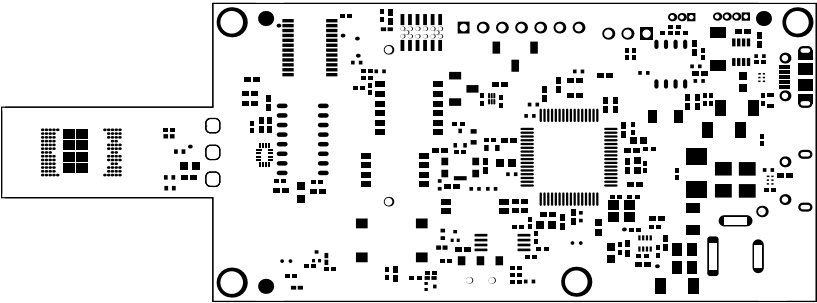
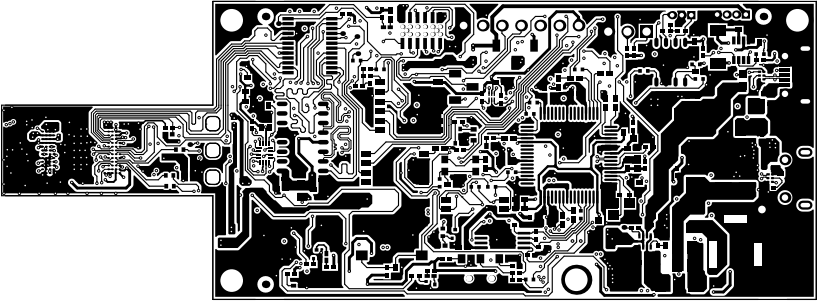


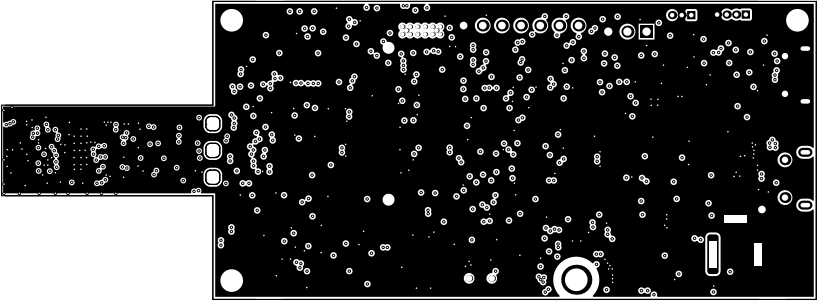
ALL ARTWORK VIEWED FROM TOP SIDE	BOARD #: PROC177	REV: B	SUN REV: Not in version control
LAYER NAME = Top Overlay	TID #: N/A		
PLOT NAME = Top Overlay	GENERATED : 1/18/2024 11:51:27 AM		TEXAS INSTRUMENTS



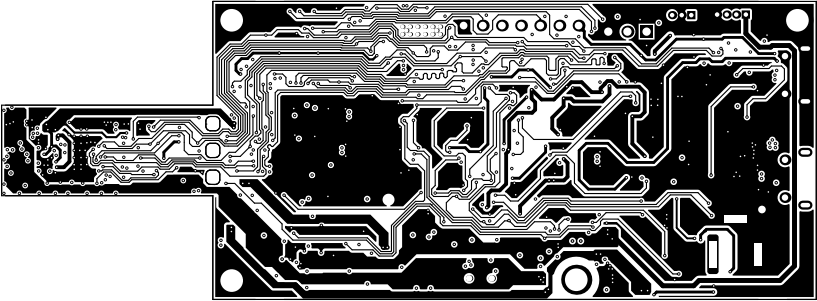
ALL ARTWORK VIEWED FROM TOP SIDE	BOARD #: PROC177	REV: B	SUN REV: Not in version control
LAYER NAME = Top Solder	TID #: N/A		
PLOT NAME = Top Solder Mask	GENERATED : 1/18/2024 11:51:27 AM	TEXAS INSTRUMENTS	



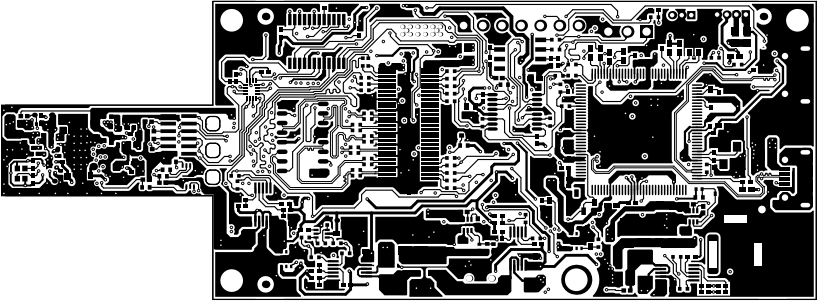
ALL ARTWORK VIEWED FROM TOP SIDE	BOARD #: PROC177	REV: B	SUN REV: Not in version control
LAYER NAME = Top Layer	TID #: N/A		
PLOT NAME = Top Layer	GENERATED : 1/18/2024 11:51:28 AM	TEXAS INSTRUMENTS	



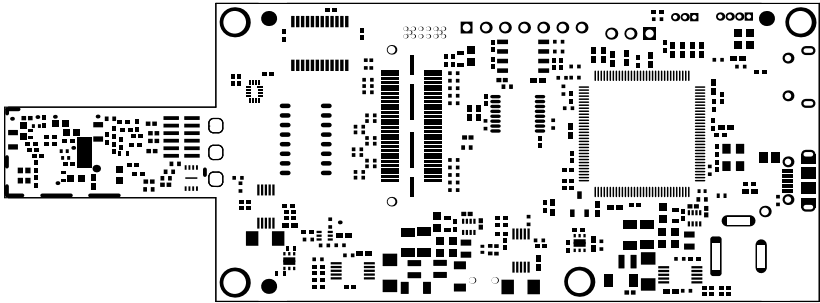
ALL ARTWORK VIEWED FROM TOP SIDE	BOARD #: PROC177	REV: B	SUN REV: Not in version control
LAYER NAME = Int1 <GND>	TID #: N/A		
PLOT NAME = INT1<GND>	GENERATED : 1/18/2024 11:51:28 AM		TEXAS INSTRUMENTS



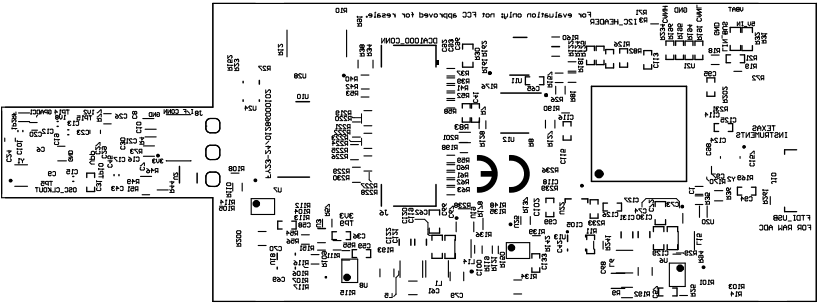
ALL ARTWORK VIEWED FROM TOP SIDE	BOARD #: PROC177	REV: B	SUN REV: Not in version control
LAYER NAME = Int2 (PWR)	TID #: N/A		
PLOT NAME = INT2(PWR)	GENERATED : 1/18/2024 11:51:28 AM	TEXAS INSTRUMENTS	



ALL ARTWORK VIEWED FROM TOP SIDE	BOARD #: PROC177	REV: B	SUN REV: Not in version control
LAYER NAME = Bottom Layer	TID #: N/A		
PLOT NAME = Bottom Layer	GENERATED : 1/18/2024 11:51:28 AM	TEXAS INSTRUMENTS	



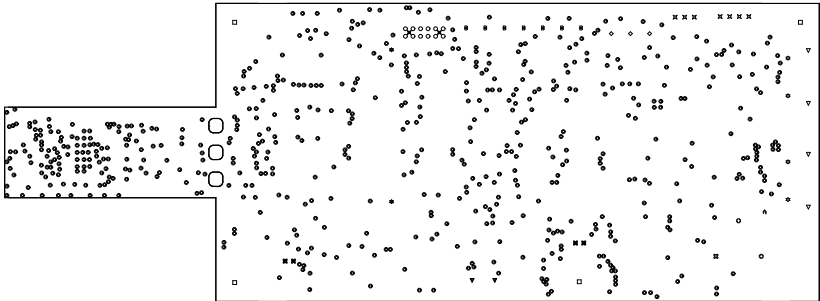
ALL ARTWORK VIEWED FROM TOP SIDE	BOARD #: PROC177	REV: B	SUN REV: Not in version control
LAYER NAME = Bottom Solder	TID #: N/A		
PLOT NAME = Bottom Solder Mask	GENERATED : 1/18/2024 11:51:28 AM	TEXAS INSTRUMENTS	



ALL ARTWORK VIEWED FROM TOP SIDE	BOARD #: PROC177	REV: B	SUN REV: Not in version control
LAYER NAME = Bottom Overlay	TID #: N/A		
PLOT NAME = Bottom Overlay	GENERATED : 1/18/2024 11:51:28 AM	TEXAS INSTRUMENTS	

Symbol	Count	Hole Size	Plated	Hole Type	Hole Tolerance (+)	Hole Tolerance (-)	Hole Length
⌘	1	39.37mil (1.000mm)	PTH	Rectangle	3.94mil (0.100mm)	3.94mil (0.100mm)	137.79mil (3.500mm)
A	1	40.00mil (1.016mm)	PTH	Round	3.00mil (0.076mm)	3.00mil (0.076mm)	-
⌘	2	23.62mil (0.600mm)	NPTH	Round	3.00mil (0.076mm)	3.00mil (0.076mm)	-
▽	2	33.47mil (0.850mm)	NPTH	Round	3.00mil (0.076mm)	3.00mil (0.076mm)	-
⊗	2	39.37mil (1.000mm)	PTH	Rectangle	3.94mil (0.100mm)	3.94mil (0.100mm)	118.11mil (3.000mm)
☆	2	40.16mil (1.020mm)	NPTH	Round	2.00mil (0.051mm)	2.00mil (0.051mm)	-
◇	3	43.31mil (1.100mm)	PTH	Round	3.00mil (0.076mm)	3.00mil (0.076mm)	-
⌘	4	7.87mil (0.200mm)	PTH	Round	3.00mil (0.076mm)	3.00mil (0.076mm)	-
▽	4	23.62mil (0.600mm)	PTH	Slot	3.00mil (0.076mm)	3.00mil (0.076mm)	51.18mil (1.300mm)
☆	4	33.47mil (0.850mm)	PTH	Round	3.00mil (0.076mm)	3.00mil (0.076mm)	-
□	4	118.11mil (3.000mm)	PTH	Round	3.00mil (0.076mm)	3.00mil (0.076mm)	-
⌘	7	23.62mil (0.600mm)	PTH	Round	3.00mil (0.076mm)	3.00mil (0.076mm)	-
B	7	40.16mil (1.020mm)	PTH	Round	3.00mil (0.076mm)	3.00mil (0.076mm)	-
○	12	22.05mil (0.560mm)	NPTH	Round	3.00mil (0.076mm)	3.00mil (0.076mm)	-
⊙	603	8.00mil (0.203mm)	PTH	Round	3.00mil (0.076mm)	3.00mil (0.076mm)	-
	658 Total						

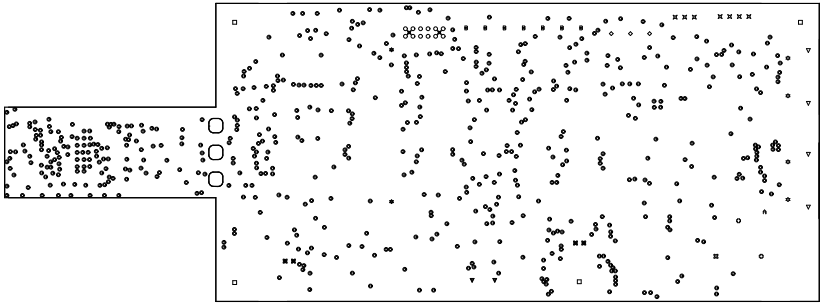
Slot definitions : Routed Path Length = Calculated from tool start centre position to tool end centre position.
Hole Length = Routed Path Length + Tool Size = Slot length as defined in the PCB layout



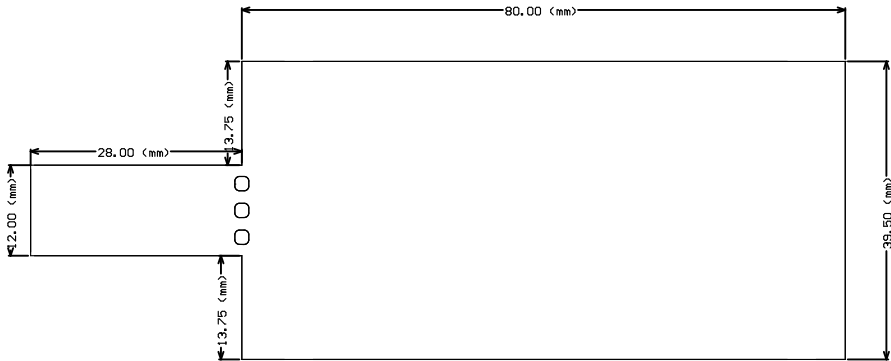
ALL ARTWORK VIEWED FROM TOP SIDE	BOARD #: PROC177	REV: B	SUN REV: Not in version control
LAYER NAME = Drill Drawing	TID #: N/A		
PLOT NAME = Drill Drawing	GENERATED : 1/18/2024 11:51:28 AM	TEXAS INSTRUMENTS	

Symbol	Count	Hole Size	Plated	Hole Type	Hole Tolerance (+)	Hole Tolerance (-)	Hole Length
⌘	1	39.37mil (1.000mm)	PTH	Rectangle	3.94mil (0.100mm)	3.94mil (0.100mm)	137.79mil (3.500mm)
A	1	40.00mil (1.016mm)	PTH	Round	3.00mil (0.076mm)	3.00mil (0.076mm)	-
⌘	2	23.62mil (0.600mm)	NPTH	Round	3.00mil (0.076mm)	3.00mil (0.076mm)	-
▽	2	33.47mil (0.850mm)	NPTH	Round	3.00mil (0.076mm)	3.00mil (0.076mm)	-
⊗	2	39.37mil (1.000mm)	PTH	Rectangle	3.94mil (0.100mm)	3.94mil (0.100mm)	118.11mil (3.000mm)
☆	2	40.16mil (1.020mm)	NPTH	Round	2.00mil (0.051mm)	2.00mil (0.051mm)	-
◇	3	43.31mil (1.100mm)	PTH	Round	3.00mil (0.076mm)	3.00mil (0.076mm)	-
⌘	4	7.87mil (0.200mm)	PTH	Round	3.00mil (0.076mm)	3.00mil (0.076mm)	-
▽	4	23.62mil (0.600mm)	PTH	Slot	3.00mil (0.076mm)	3.00mil (0.076mm)	51.18mil (1.300mm)
☆	4	33.47mil (0.850mm)	PTH	Round	3.00mil (0.076mm)	3.00mil (0.076mm)	-
□	4	118.11mil (3.000mm)	PTH	Round	3.00mil (0.076mm)	3.00mil (0.076mm)	-
⌘	7	23.62mil (0.600mm)	PTH	Round	3.00mil (0.076mm)	3.00mil (0.076mm)	-
B	7	40.16mil (1.020mm)	PTH	Round	3.00mil (0.076mm)	3.00mil (0.076mm)	-
○	12	22.05mil (0.560mm)	NPTH	Round	3.00mil (0.076mm)	3.00mil (0.076mm)	-
⊙	603	8.00mil (0.203mm)	PTH	Round	3.00mil (0.076mm)	3.00mil (0.076mm)	-
	658 Total						

Slot definitions : Routed Path Length = Calculated from tool start centre position to tool end centre position.
Hole Length = Routed Path Length + Tool Size = Slot length as defined in the PCB layout



ALL ARTWORK VIEWED FROM TOP SIDE	BOARD #: PROC177	REV: B	SUN REV: Not in version control
LAYER NAME = Drill Drawing	TID #: N/A		
PLOT NAME = Drill Drawing	GENERATED : 1/18/2024 11:51:29 AM	TEXAS INSTRUMENTS	



ALL ARTWORK VIEWED FROM TOP SIDE	BOARD #: PROC177	REV: B	SUN REV: Not in version control
LAYER NAME = M2 Board Dimensions	TID #: N/A		
PLOT NAME = Board Dimensions	GENERATED : 1/18/2024 11:51:31 AM	TEXAS INSTRUMENTS	